

IUEC INCIDENT SUMMARY

APRIL 17, 2024 | INJURY



Warning – Contains Graphic Image

Description of Incident

A mechanic and an assistant mechanic were using a cart to move a hydraulic jack so other trades could work in the area.

While lifting the jack onto the cart, a rope attached to the jack for hoisting got caught, causing the jack to roll.

The assistant mechanic's thumb was caught between the cart and the jack.

Current Status: The assistant mechanic had surgery to repair the crushed bones in his thumb. A plate and three screws were installed. He will have to go through two to three months of therapy hoping for a 75-80% recovery.

Recommendations & Lessons Learned

Always follow the company safety policy.

Always perform a JHA/JSA as per company policy.

Always perform a new JHA when planned job activities change.

Possible Root Causes

Failure to prepare the material for safe transportation.

Improper hand and body position for lifting.

Field Employee's Safety Handbook

Section 12 Material Handling

12.1 Manual Handling Lifting of Material

- (a) When any heavy object is to be lifted and carried to another point, first inspect and clear the area and route over which the object is to be carried. Be sure nothing is in the way that might cause slipping or tripping.
- (b) Inspect the object to be lifted to determine how it will be grasped. Make sure it is free of sharp edges, protruding nail points, slivers or other hazards that might cause injury to the hands or body. Wear appropriate gloves to protect hands. (See Section 3.)



Control Type: Electric

Machine Type: Submersible Hydraulic

Speed: Unknown

Capacity: Unknown

Rise: 2 Floors

Hoistway Configuration: Simplex

JHS/JSA Completed: Yes



IUEC SAFETY ALERTS

IUEC Safety Stand Down Day | April 28, 2025

PHOTOS APPROVED BY IUEC SAFETY

IUEC INCIDENT SUMMARY

MAY 22, 2024 | INJURY



Description of Incident

An apprentice was disassembling the bolts and angle iron used to secure a bundle of rails for shipping.

When the nut was removed from the bolt, the rails shifted, and his finger was crushed against the wood blocking supporting the bundle of rails.

Current Status: The apprentice's finger was broken, placed in a splint, and he has returned to work.

Recommendations & Lessons Learned

Always follow the company safety policy.

Always perform a JHA/JSA as per company policy.

Always follow company Standard Work Processes.

Possible Root Causes

Improper blocking of the material.
Unfamiliar with the type of shipping containment.

FIELD EMPLOYEE'S SAFETY HANDBOOK
Section 12 Material Handling

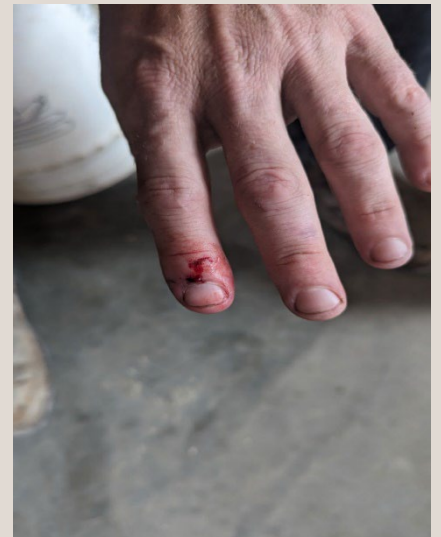
12.2 Ramping and Blocking of Material

(b) Pay particular attention to the position of fingers and feet when using rollers, pinchbars, jacks and blocking to move heavy materials and equipment.

(f) When placing blocking and cribbing, be sure to have ample bearing surface. Never stack the timber in such a manner that maneuvering the load could cause it to tip.



Control Type: Electric
Machine Type: Gearless Traction
Speed: 350 ft/min
Capacity: 3,500 lbs
Rise: 7 Floors
Hoistway Configuration: Duplex
JHS/JSA Completed: Yes



IUEC SAFETY ALERTS

IUEC Safety Stand Down Day | April 28, 2025

PHOTOS APPROVED BY IUEC SAFETY

IUEC INCIDENT SUMMARY

MAY 27, 2024 | INJURY



Warning – Contains Graphic Image

Description of Incident

A maintenance team was replacing a dry pump motor on a hydraulic elevator.

As they lifted the motor to remove the plastic shipping wrap, the motor slipped from the mechanic's hands. The motor landed on the apprentice's finger, crushing his fingertip.

Current Status: The apprentice went to the hospital and received stitches on the tip of his finger to mend the wound. He is currently out of work recovering from the injury.

Recommendations & Lessons Learned

- Always follow the company safety policy.
- Always perform a JHA/JSA as per company policy.
- Always follow company Standard Work Practices.
- Consider using straps or hooks for lifting to keep hands clear.

Possible Root Causes

- Lack of communication.
- Unfamiliar with the task.

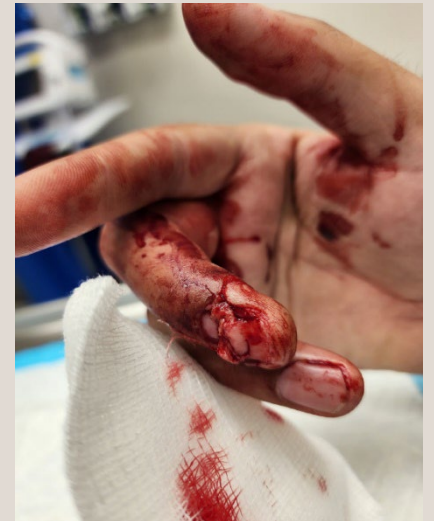
Field Employees' Safety Handbook
Section 12 Material Handling

12.1 Manual Handling Lifting of Material

- (b) Inspect the object to be lifted to determine how it will be grasped. Make sure it is free of sharp edges, protruding nail points, slivers or other hazards that might cause injury to the hands or body. Wear appropriate gloves to protect hands.



Control Type: Electric
Machine Type: Dry Hydraulic
Speed: 150 ft/min
Capacity: 3,500 lbs
Rise: 2 Floors
Hoistway Configuration: Simplex
JHS/JSA Completed: Yes



PHOTOS APPROVED BY IUEC SAFETY

IUEC SAFETY ALERTS

IUEC Safety Stand Down Day | April 28, 2025