

IUEC INCIDENT SUMMARY

FEBRUARY 2, 2024 | INJURY



Description of Incident

A mechanic was in the lower well of an escalator removing steps. The unit was not equipped with a pendant for inspection operation.

While the mechanic was removing the first step it didn't line up with the crab track, so he pushed the step back in and attempted to jog the unit to have it line up.

When he jogged the unit, the escalator started to run on automatic and the steps began to pile up while he was still in the well.

The mechanic was able to free himself and was taken to the hospital via ambulance.

Current Status: The mechanic had surgery to repair his fractured foot and is hopeful to return to work in 4-6 months.

Recommendations & Lessons Learned

Always follow the company safety policy.

Always perform a JHA/JSA as per company policy.

Always follow the MCP.

Never stand in the truss or pit while moving an escalator.

Possible Root Causes

Lack of a pendant station for inspection operation.

Lack of Standard Work Practice for step removal.

FIELD EMPLOYEE'S SAFETY HANDBOOK

Section 16 Escalators and Moving Walks

(n) Where possible, do not "inch" equipment unless the holding circuit has been opened.



Control Type: Electric
Machine Type: Escalator
Speed: 100 ft/min
Capacity: Unknown
Rise: 1 Floor
Hoistway Configuration: Single Unit
JHS/JSA Completed: Yes



IUEC SAFETY ALERTS

IUEC Safety Stand Down Day | April 28, 2025

PHOTOS APPROVED BY IUEC SAFETY

IUEC INCIDENT SUMMARY

MAY 7, 2024 | CLOSE CALL



Description of Incident

A construction crew installed lifelines on the hoisting beam and were preparing to set up the rigging equipment on the same beam.

An extension ladder was placed from the top landing to the back wall of the hoistway. The apprentice climbed the ladder, grabbed the hoisting beam, shook it and noticed it was not solidly attached.

The beam attachment was enclosed by drywall on the hoistway side and stucco covered the outside of the hoistway. The crew notified their superintendent and the General Contractor.

The GC directed the framing crew who installed the beam to open the exterior wall to expose the beam. The beam had 2x4's wedged in place to prevent the beam from flipping. No lag bolts were installed as required by the engineered drawings.

The framing crew confirmed their foreman directed them to use the 2x4's because they did not have the required lag bolts.

Current Status: The beam was secured properly using 5/8" lag bolts as required. The other two hoistways on-site were inspected and found to be missing the 5/8" lag bolts. The problem was corrected on all hoistways.

Recommendations & Lessons Learned

Always follow the company safety policy.

Always perform a JHA/JSA as per company policy.

Always verify anchorages for lifelines. Hoisting and rigging must be properly secured.



Possible Root Causes

No verification process of proper installation of hoisting beams.

Field Employee's Safety Handbook

Section 12 Material Handling

12.3 Hoisting and Rigging

(f) Before making the first hoist, and at the start of each day thereafter, when the hoist is to be used, the rigging, overhead supports, blocking, etc., shall be inspected by the mechanic/MIC. The hoist shall be inspected visually prior to each use. It shall be tested by raising the load several inches and holding it there prior to making an actual lift.

29 CFR 1926 OSHA – Construction Industry Regulations
1926.451 (g) (3) (i) When vertical lifelines are used, they shall be fastened to a fixed safe point of anchorage, shall be independent of the scaffold, and shall be protected from sharp edges and abrasion. Safe points of anchorage include structural members of buildings, but do not include standpipes, vents, other piping systems, electrical conduit, outrigger beams or counterweights.

Control Type: Microprocessor

Machine Type: Traction (CSB) MRL

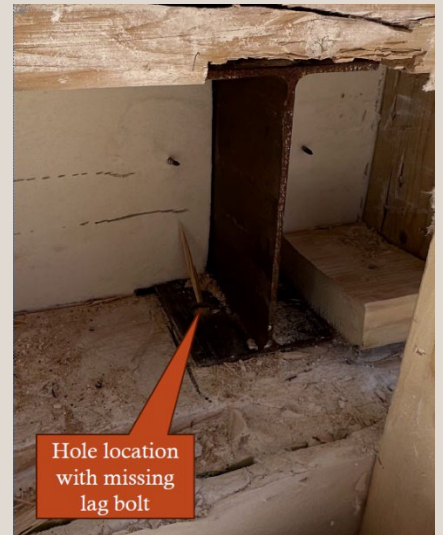
Speed: 200 ft/min

Capacity: 2,500 lbs.

Rise: 3 Floors

Hoistway Configuration: Simplex

JHS/JSA Completed: Yes



PHOTOS APPROVED BY IUEC SAFETY

IUEC SAFETY ALERTS

IUEC Safety Stand Down Day | April 28, 2025

IUEC INCIDENT SUMMARY

MAY 16, 2024 | INJURY



Warning – Contains Graphic Image

Description of Incident

Two hole-less hydraulic jacks and rails were bundled together on the same pallet when they were delivered to the jobsite.

An apprentice was moving the hydraulic jacks from the top of the bundled pallet so he could access the rails underneath.

While moving the second jack, the load slipped off the pallet, smashing his thumb between the two jacks, causing a deep cut through his thumb and nail bed.

Current Status: The apprentice was treated at a nearby hospital the same day. He lost his thumb nail and received 4 stitches. He was released back to work on light duty.

Recommendations & Lessons Learned

Always follow the company safety policy.

Always perform a JHA/JSA as per company policy.

Always ask for assistance when lifting heavy or awkward loads.

Possible Root Causes

Lack of awareness.

Lack of experience unloading mixed materials.

Field Employees' Safety Handbook

Section 12 Material Handling

Lifting Loads

(a) Incorrect lifting methods require unnecessary effort and often cause strain or other types of injuries. When it is necessary to lift any object which is difficult for one person to handle, ask for help.



Control Type: Microprocessor

Machine Type: Hydraulic MRL

Speed: 150 ft/min

Capacity: 2,500 lbs

Rise: 2 Floors

Hoistway Configuration: Simplex

JHS/JSA Completed: Yes



PHOTOS APPROVED BY IUEC SAFETY

IUEC SAFETY ALERTS

IUEC Safety Stand Down Day | April 28, 2025

Elimination of Multi-Purpose Tools

April 19, 2019

Brothers and Sisters,

Following the lead of Otis Elevator, and as a result of a recent employee incident, the NAA Safety team has made the decision to eliminate the multi-purpose tool from field use.

The IUEC has discussed this issue and has agreed to support the elimination of all multi-purpose tools such as Leatherman, Sog, Gerber and all similar tools from field use in our industry.



Through education provided by NEIEP, CEIEP and our employers, we have been taught and trained that there is a proper tool to be used for every task.

All employers, please consider joining Otis and The IUEC in getting this message out to your employees and remove the multi-purpose tool from use within our industry. By doing so, we could save a life.

Workers Memorial Day in The US & National Day of Mourning in Canada is April 28th.

Take time to remember those who have lost their lives by going to work to earn a living and became an On The Job Fatality.

<https://www.iuec.org/index.php/my-iuec/memorial-page/>

Fraternally,

IUEC Safety Directors



It is the mission of the IUEC Safety Committee to improve the Elevator Constructor's sense of awareness to daily hazards present in the workplace.