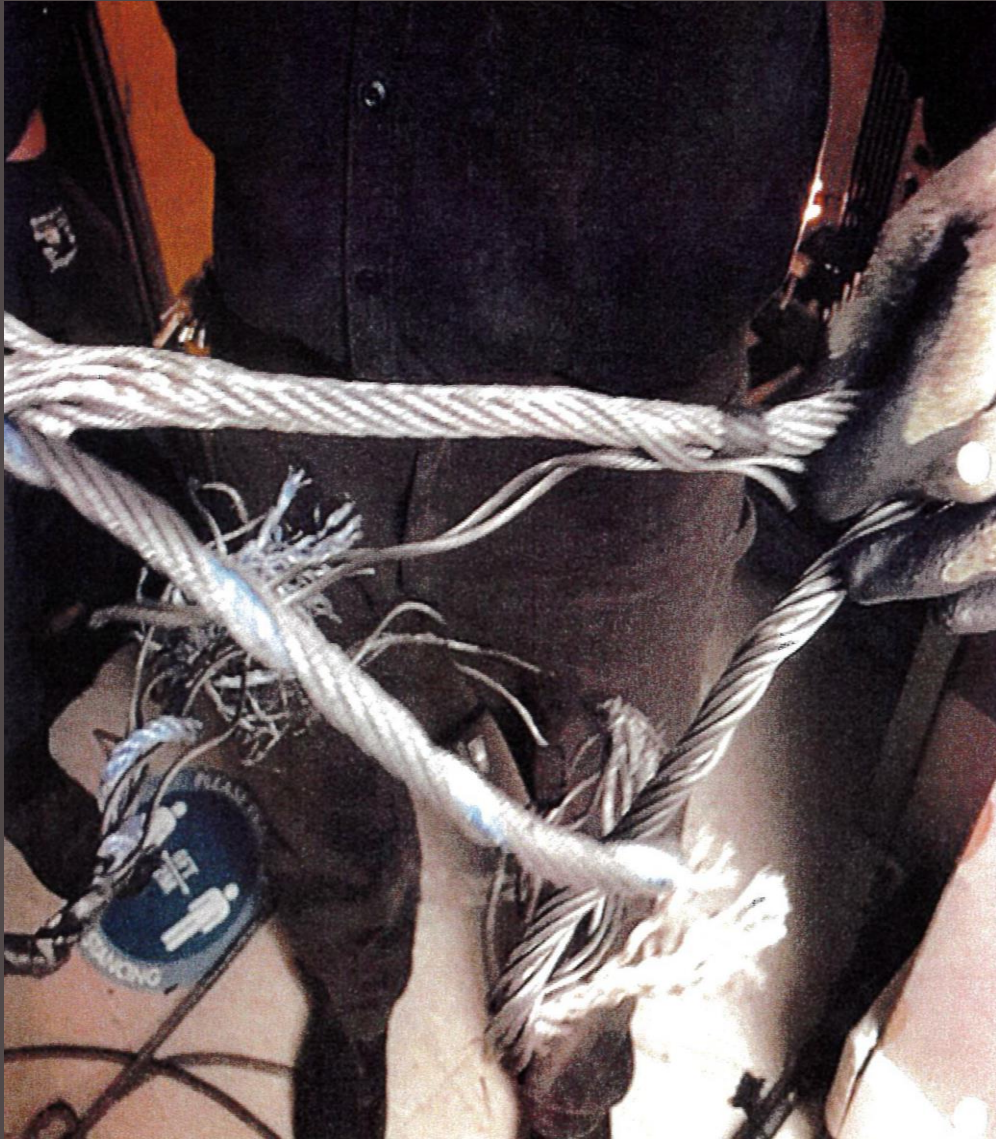




# IUEC INCIDENT SUMMARY

CLOSE CALLS, NEAR MISSES AND INJURIES

“STRUCK BY INJURY”



## Description of Incident

Control Type: Solid State

Machine Type: DAF 540

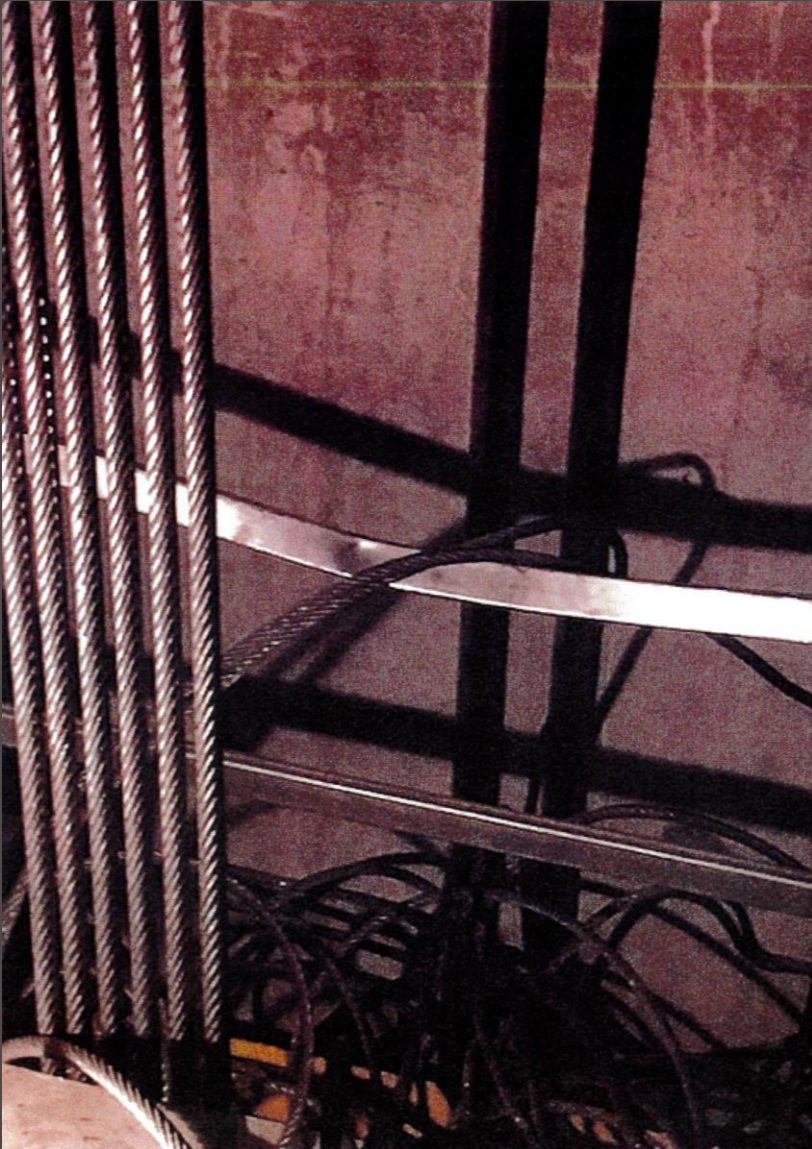
Speed: Unknown

Capacity: Unknown

Rise: 60 Floors

Hoistway Configuration: Duplex

- Two mechanics and a helper were performing a governor rope replacement at a 60-floor residence building and they accessed the hoistway at the P4 level.
- They hoisted the governor rope and extra spool for the old governor rope into the hoistway pit using the car sling without performing an approved lift plan.
- The mechanics entered the pit and set up the spool of new rope and extra spool while the helper accessed the car top and positioned the elevator overhead of the mechanics. The helper proceeded to the machine room to place a group lock on the disconnect of the elevator and returned to the cartop.
- One of the mechanics removed the governor rope from the car side safety and married the new cable with approximately a 2-foot splice, (reaving splice was not used).



## Description of Incident

---

- The mechanics proceeded to unspool the new rope and spool the old rope while the helper was on the car top guiding the ropes beside the car and counterweight bracket.
- After a short period of time spooling and unspooling the ropes, the mechanics noticed that the ropes became slack and came down the hoistway onto the cartop, striking the helper on the back and leg.
- Mechanical energy was released causing the ropes to strike and injure the helper and cause damage to the car top handrail.
- The helper sought medical treatment at a local area hospital and was released a few hours later.



## Recommendations and Lessons Learned

---

- Always follow the company safety policy
- Always perform a JHA/JSA per company policy
- Consider the use of Reeving Splices to marry wire ropes
- Use approved products and procedures for marrying wire ropes during elevator repairs. The married governor rope had separated due to incorrect splicing (length of splice)
- OSH Act Sections 25-28
- Employer and employee responsibilities:
  - “Equipment, materials and protective devices provided by the employer are used as prescribed”
  - “use or operate any equipment, machine, device or thing or work in a manner that may endanger himself, herself or any other worker”

